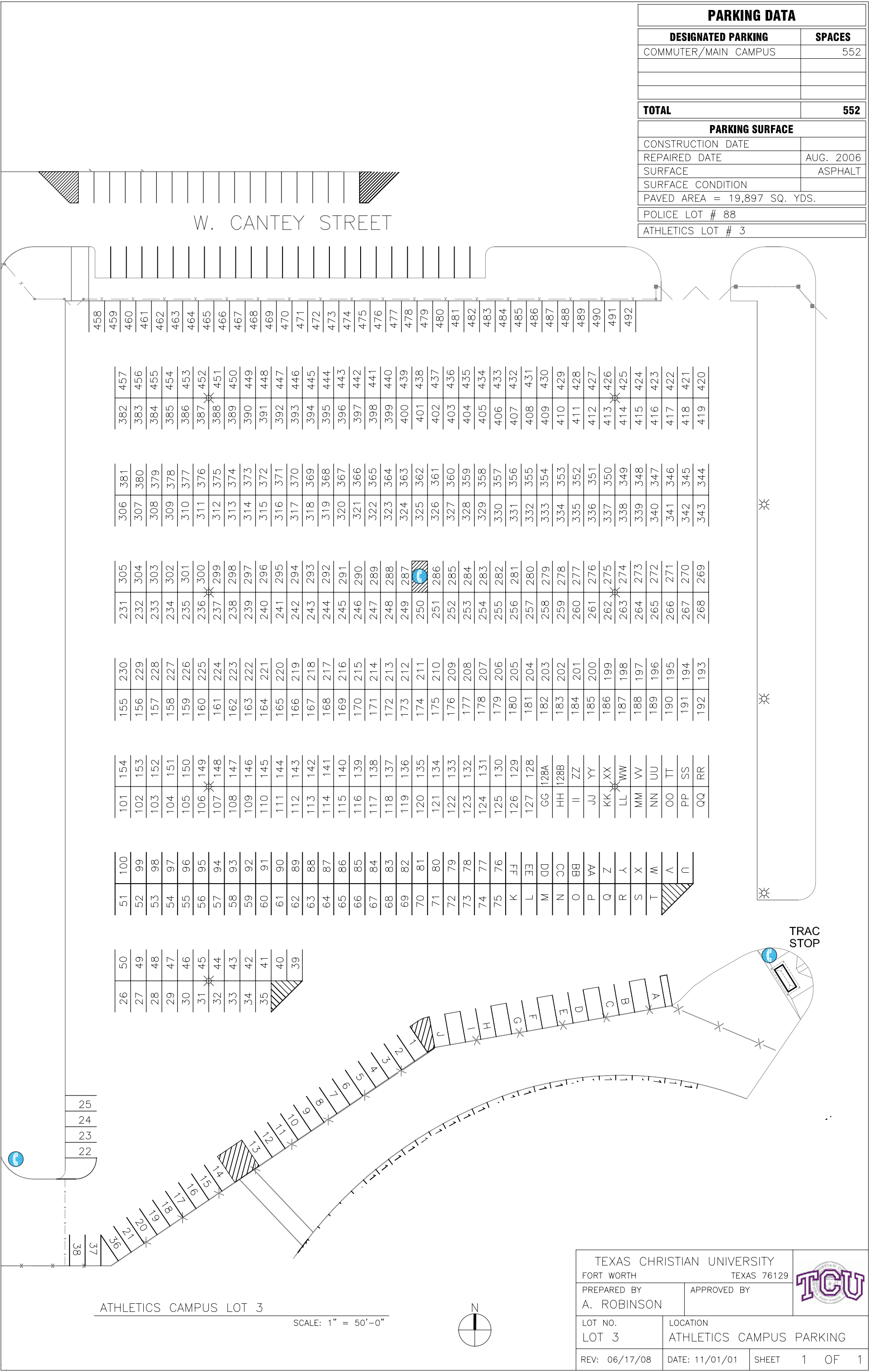


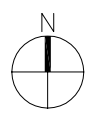
PARKING DATA	
DESIGNATED PARKING	SPACES
COMMUTER/MAIN CAMPUS	552
TOTAL	552
PARKING SURFACE	
CONSTRUCTION DATE	
REPAIRED DATE	AUG. 2006
SURFACE	ASPHALT
SURFACE CONDITION	
PAVED AREA = 19,897 SQ. YDS.	
POLICE LOT # 88	
ATHLETICS LOT # 3	



W. CANTEY STREET

ATHLETICS CAMPUS LOT 3

SCALE: 1" = 50'-0"



TEXAS CHRISTIAN UNIVERSITY FORT WORTH TEXAS 76129		
PREPARED BY A. ROBINSON	APPROVED BY	
LOT NO. LOT 3	LOCATION ATHLETICS CAMPUS PARKING	
REV: 06/17/08	DATE: 11/01/01	SHEET 1 OF 1